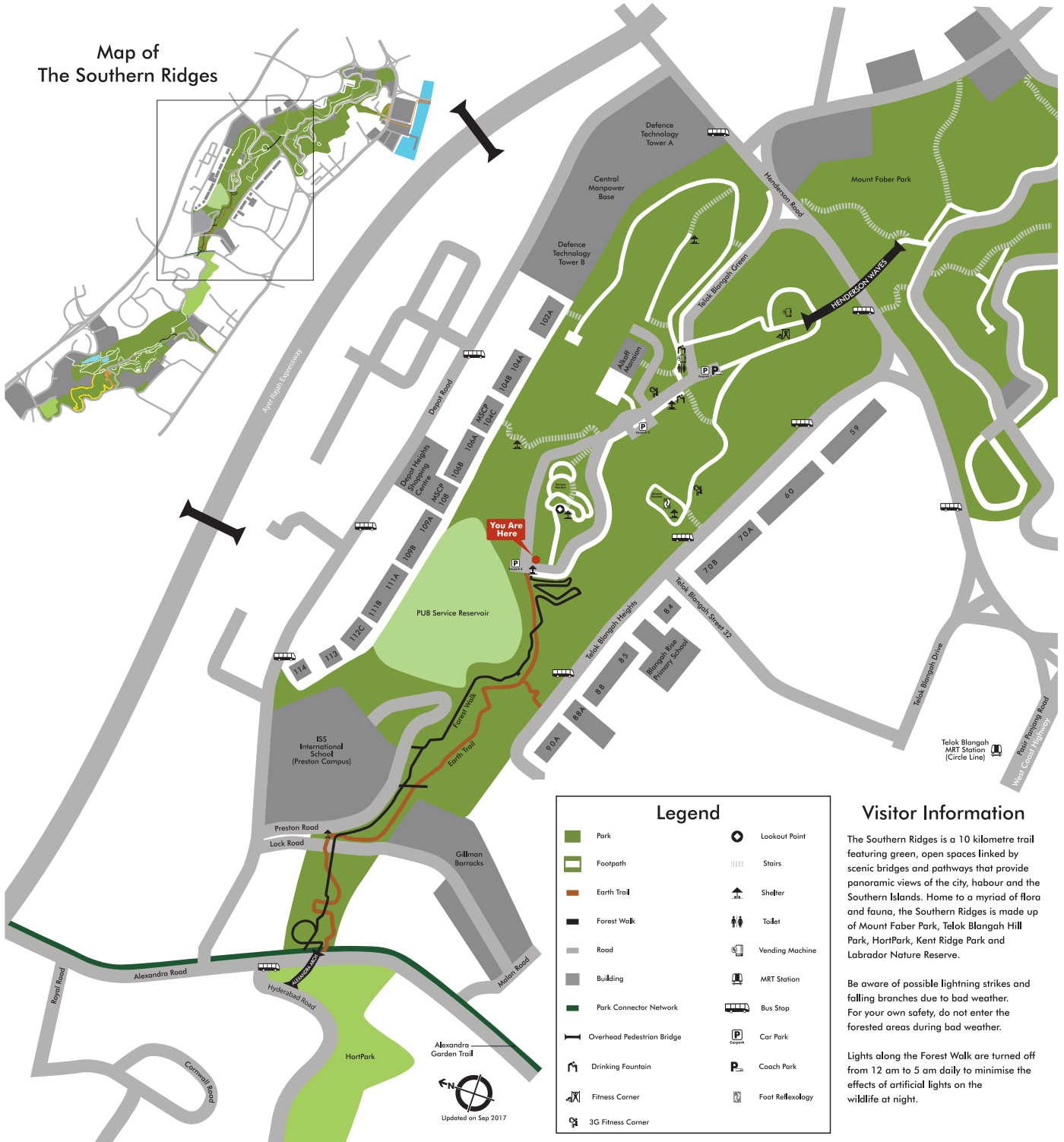




# Telok Blangah Hill Park

Map of The Southern Ridges



## Visitor Information

The Southern Ridges is a 10 kilometre trail featuring green, open spaces linked by scenic bridges and pathways that provide panoramic views of the city, harbour and the Southern Islands. Home to a myriad of flora and fauna, the Southern Ridges is made up of Mount Faber Park, Telok Blangah Hill Park, HortPark, Kent Ridge Park and Labrador Nature Reserve.

Be aware of possible lightning strikes and falling branches due to bad weather. For your own safety, do not enter the forested areas during bad weather.

Lights along the Forest Walk are turned off from 12 am to 5 am daily to minimise the effects of artificial lights on the wildlife at night.

